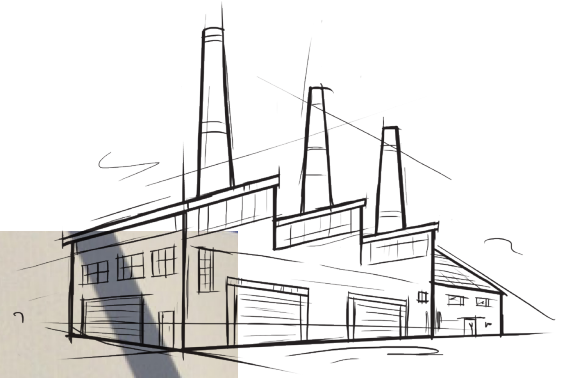


CONROCK®

Sandwich Wall Panel Insulation



ROCKWOOL CONROCK® is a board insulation designed specifically for application in Sandwich Wall Panel (SWP) systems where excellent thermal and fire resistance properties are required.

As with all ROCKWOOL products, it has excellent sound-dampening properties, is dimensionally stable, vapor permeable and will not encourage the growth of mold. Being non-combustible, with a melting point of approx. 2150°F (1177°C), CONROCK® does not promote smoke or flame spread when exposed to flame.

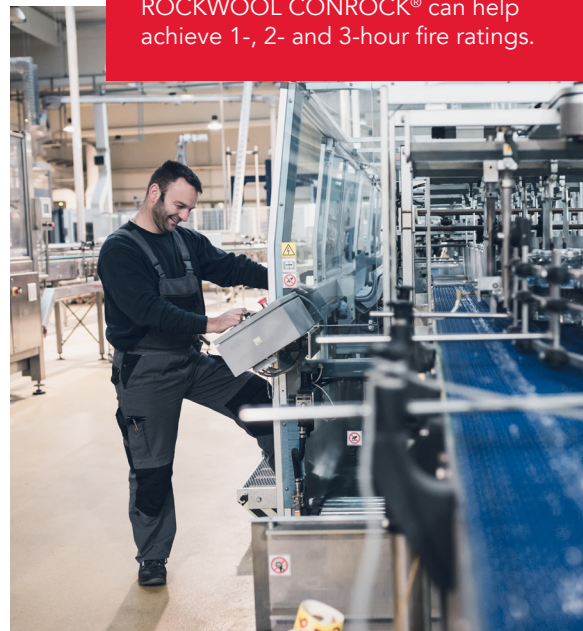
Recognizing that every manufacturer has different requirements, ROCKWOOL has created this versatile product line to service a variety of fabrications and applications.

Engineered to address specific industry needs, CONROCK® is a key component in any assembly for fire walls or zero lot line applications, and will also provide incredible sound attenuation for a quiet environment.

Learn more at rockwool.com

Outstanding Fire Resistance

ROCKWOOL CONROCK® can help achieve 1-, 2- and 3-hour fire ratings.



CONROCK®

Sandwich Wall Panel Insulation

Technical Data Sheet

Board Insulation 07210* • Board Insulation 07 21 13**
 Structural Panels 06 12 00** • Structural Framing 05 12 00**
 Wall Panels 07 42 00** • Fabricated Engineered Structures 12 34 00**

ROCKWOOL CONROCK® is a rigid mineral wool insulation board designed for use in sandwich panel systems.

	Performance	Test Standard
Compliance	Mineral Fiber Block and Board Thermal Insulation - Type IVB Compliant Mineral Fiber Thermal Insulation for Buildings - Type 1 Compliant	ASTM C612 CAN/ULC S702
Reaction to Fire	Flame spread index = 0; Smoke developed index = 0 Flame spread index = 0; Smoke developed index = 0 Determination of Non Combustibility of Building Materials - Non Combustible	ASTM E84 (UL 723) CAN/ULC S102 CAN/ULC S114
Density	Actual Density - 8.5 lbs/ft ³ (136 kg/m ³)	ASTM C303
Dimensional Stability	Linear Shrinkage - 0.19% @ 1200°F	ASTM C356
Corrosion Resistance	Stress Corrosion Cracking Tendency of Austenitic Stainless Steel - Passed Corrosion of Steel - Passed	ASTM C795 ASTM C665
Thermal Resistance	R-Value / inch @ 75°F RSI value / 25.4 mm @ 24°C	4.0 hr.ft ² .F/Btu 0.70 m ² K/W ASTM C518 (C177)
Reaction to Moisture	Moisture Sorption - 0.05% Determination of Fungi Resistance - Passed	ASTM C1104 ASTM C1338
Compressive Strength	45 kPa (6.5 psi) @ 10% compression (based on 4" board)	ASTM C165
Dimensions	For details on sizing, please contact our customer service representatives	
Acoustical Performance	125Hz 250Hz 500Hz 1000Hz 2000Hz 4000Hz NRC	ASTM C423
1.5"	0.18 0.44 0.94 1.04 1.02 1.03 0.85	
2.0"	0.28 0.60 1.09 1.09 1.05 1.07 0.95	
3.0"	0.52 0.96 1.18 1.07 1.05 1.05 1.05	
4.0"	0.86 1.11 1.20 1.07 1.08 1.07 1.10	

Issued 01-01-18
 Supersedes 08-23-17

NOTE: *Master Format 1995 Edition **Master Format 2004 Edition. As ROCKWOOL has no control over installation design and workmanship, accessory materials or application conditions, ROCKWOOL does not warranty the performance or results of any installation containing ROCKWOOL's products. ROCKWOOL's overall liability and the remedies available are limited by the general terms and conditions of sale. This warranty is in lieu of all other warranties and conditions expressed or implied, including the warranties of merchantability and fitness for a particular purpose.



8024 Esquesing Line, Milton, ON L9T 6W3
 Tel: 800-265-6878 • Fax: 800-991-0110
 rockwool.com